



- 7



98803168  
w.com



## TOTAL RECYCLING SOLUTION FOR EPS FOAM



## FOAM COMPACTOR FOR COMPRESSING AND RECYCLING

EPS / Expanded Polystyrene



## **XPS / Extruded Polystyrene**



## **PSP / Polystyrene Paper: Food tray and Cups**



### **MACHINE AVAILABLE**

CAPACITY KG/HR	COMPACTED RATIO	DENSITY KG/M3	TOTAL POWER KW
100	50:1	200-400	10.25
200	50:1	200-400	19.5
300	50:1	200-400	25.5





## FOAM DENSIFIER ZEUS FOR COMPACTING AND RECYCLING

### EPS / Expanded Polystyrene (Styrofoam)

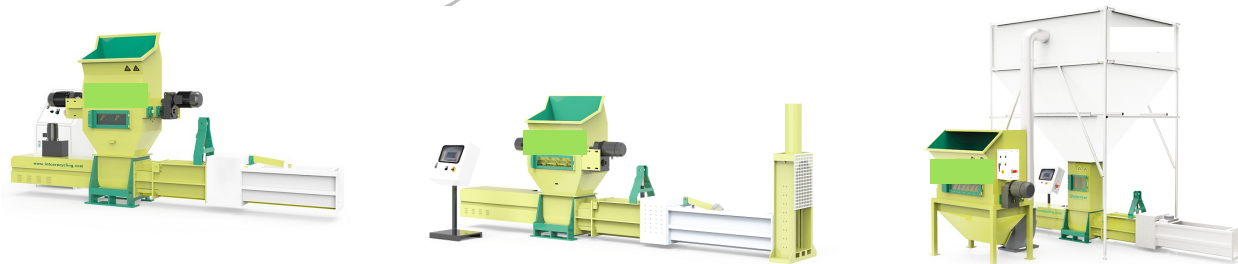


### PE FOAM



### MACHINE AVAILABLE

CAPACITY KG/HR	COMPACTED RATIO	DENSITY KG/M3	TOTAL POWER KW
100	50:1	200-400	20.5
200	50:1	200-400	38
300	50:1	200-400	46





## **FOAM HYDRAULIC COMPACTOR HERACLES**

Hydraulic Compactor is equipped with a high-efficient automatic hydraulic system, the waste foam can be crushed and then compacted into blocks with a high volume reduction ratio without heating, greatly reducing the volume of waste foam, saving storage and transportation costs.

### **APPLICABLE MATERIAL**

#### **EPS FOAM:**



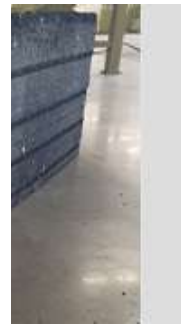
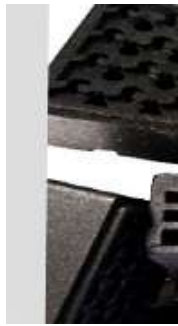
#### **EPS DUST:**



#### **PU FOAM:**



#### **EPP FOAM:Technical Data**



- Type: Foam Hydraulic Compactor
- Total Power Consumption: 24.5kw
- Feeder Power: 11kw
- Production Capacity: 200kg/h-300kg/h

*Euro Food & Brew*

## **FOAM DENSIFIER MAR SERIES FOR MELTING AND RECYCLING**

### **APPLICABLE MATERIALS:**

**EPS/EXPANDED POLYSTYRENE (STYROFOAM)**



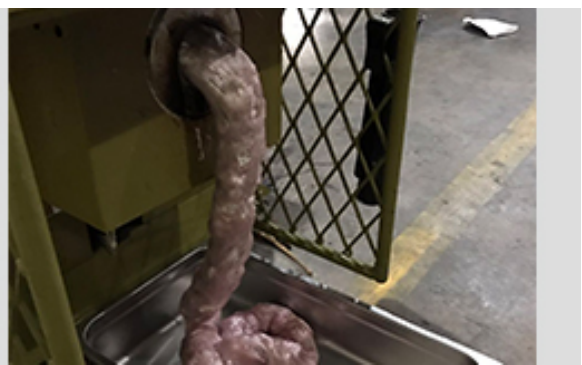
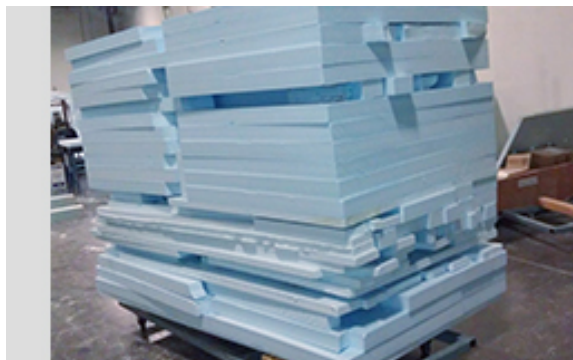
### EPS/EXPANDED POLYSTYRENE DUST



### EPE/EXPANDED POLYETHYLENE SHEET/FILM



### XPS/EXTRUDED POLYSTYRENE





**PSP/POLYSTYRENE PAPER (FOOD TRAY AND CUPS)**  
**EPP/EXPANDED POLYPROPYLENE**



**MACHINE AVAILABLE**

CAPACITY KG/HR	COMPACTED RATIO	DENSITY KG/M3	TOTAL POWER KW
50	90:1	600-800	7.5
100	90:1	600-800	23
200	90:1	600-800	37.5
300	90:1	600-800	38



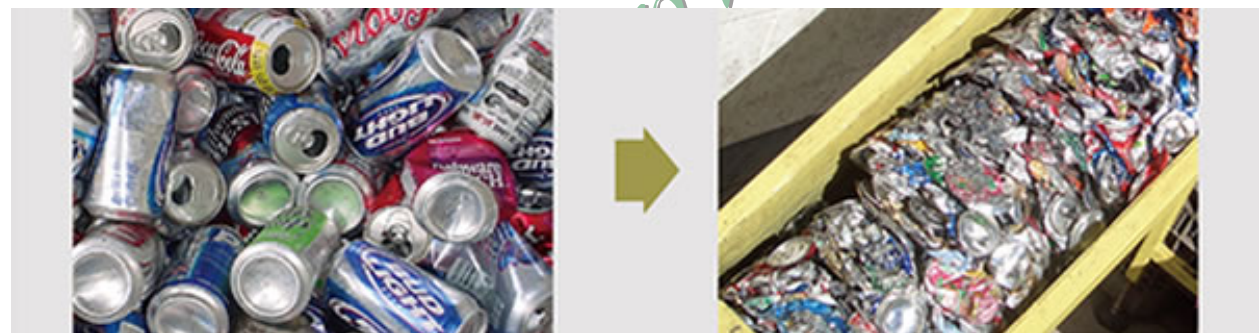
## PET BOTTLE COMPACTOR FOR DEWATERING AND RECYCLING BOTTLES

Applicable Materials:

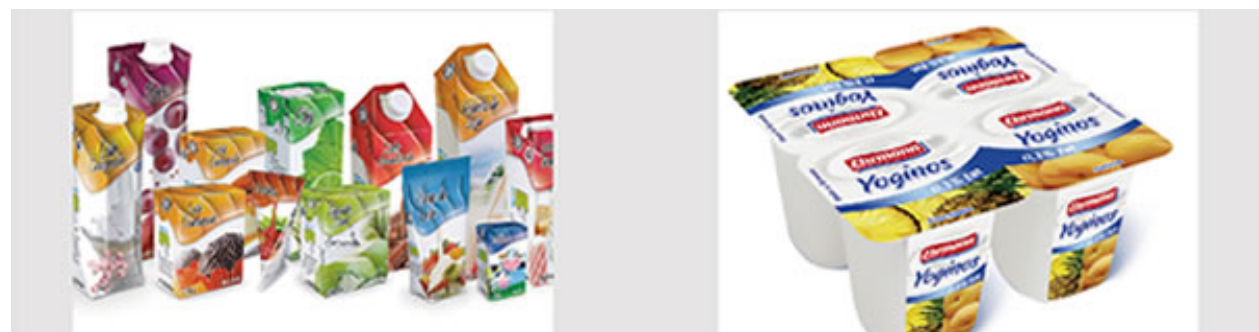
**PET Bottles**



**Aluminium Cans**



**TETRA-PAK & Yogurt Cups**



## **MACHINE AVAILABLE**

CAPACITY KG/HR	COMPACTED RATIO	SCREW ROTATION SPEED RAD/MIN.	TOTAL POWER KW
200	50:1	30	15.5
350	50:1	30	15.5
900	40:1	30	22.5

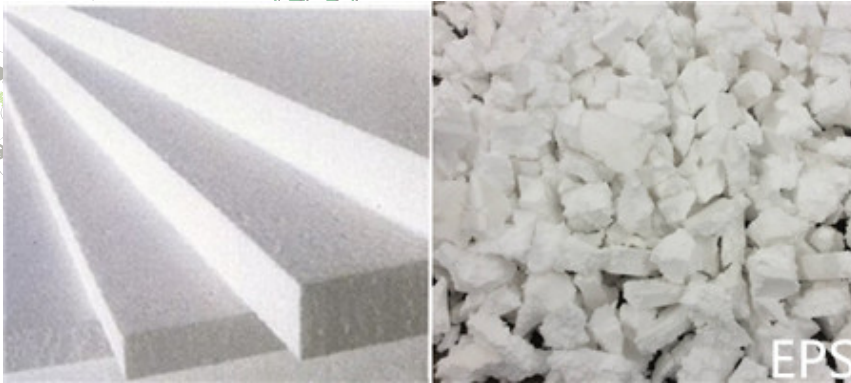




## **FOAM CRUSHER**

The foam crusher can smash the waste plastic material into granules and beads, two machines that contain foam crusher and EPS beads crusher. Efficient heavy crusher driven by two powerful motors is able to break foams of all size and densities. The sharp cutter can shred all kinds of foam, especially PE foam, EPS, into 20-50 mm size small pieces. The crusher blade is as follows:

### **EPS Foam**



### **EPE Foam**



### **EPS Beads**



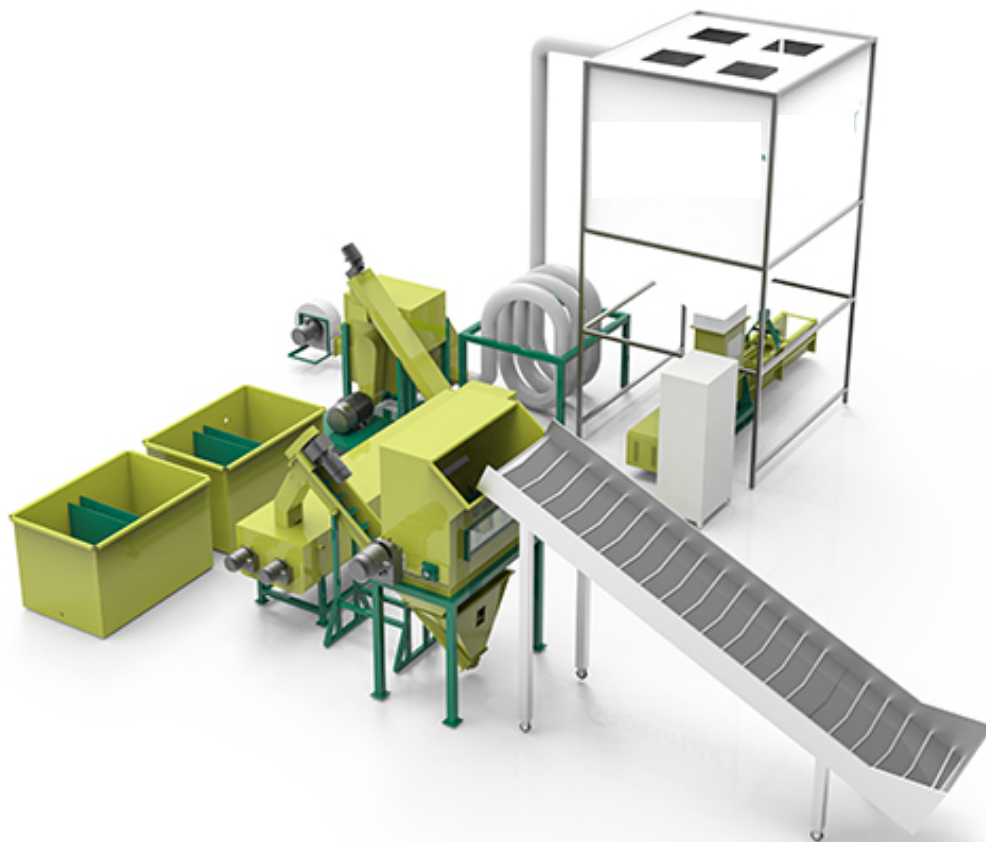
### **MACHINE AVAILABLE**

CAPACITY KG/HR	CRUSHED INTO	LBS/HR	TOTAL POWER KW
1000	30-50 MM	880-1320	3
30000	4-12 MM		15.5
1200 (SHREDDER) HDPE/PP/ABS/HIPS	2-10 PCS	12-45 PCS	30.5



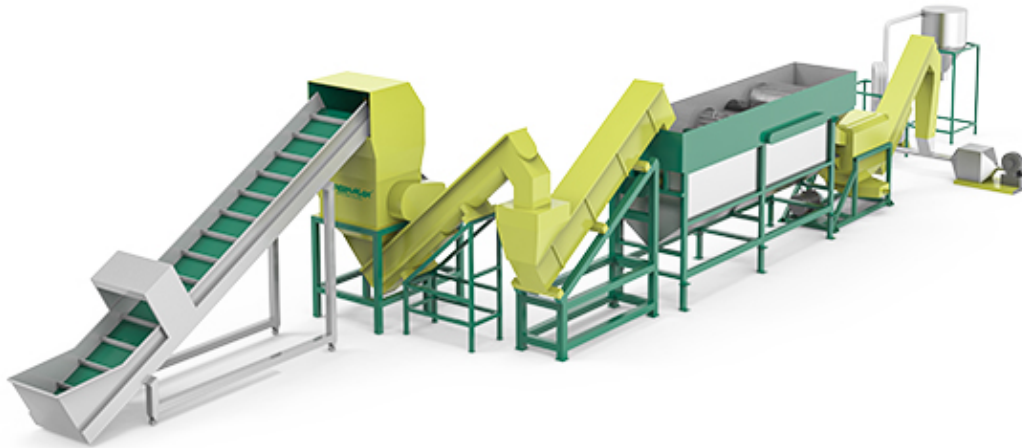
## **RECYCLING WASHING LINE TRITON SYSTEM**

Recycling washing recycling system for contaminated EPS foam waste. EPS waste will be crushed into small scraps then washed and dried, finally compacted into EPS blocks. Recycling buys back the EPS blocks.





**Recycling washing line Rigid Plastic is an EPS recycling system for contaminated Plastic at first. Plastic will be crushed into small scraps then washed and dried.**



#### **TECHNICAL DATA**

- Type: Washing System Triton
- Capacity: 400~500kg/h (For Rigid Plastic)
- Conveyor Motor Power: 1.5kw
- Crusher Motor Power: 45kw

#### **ADVANTAGES:**

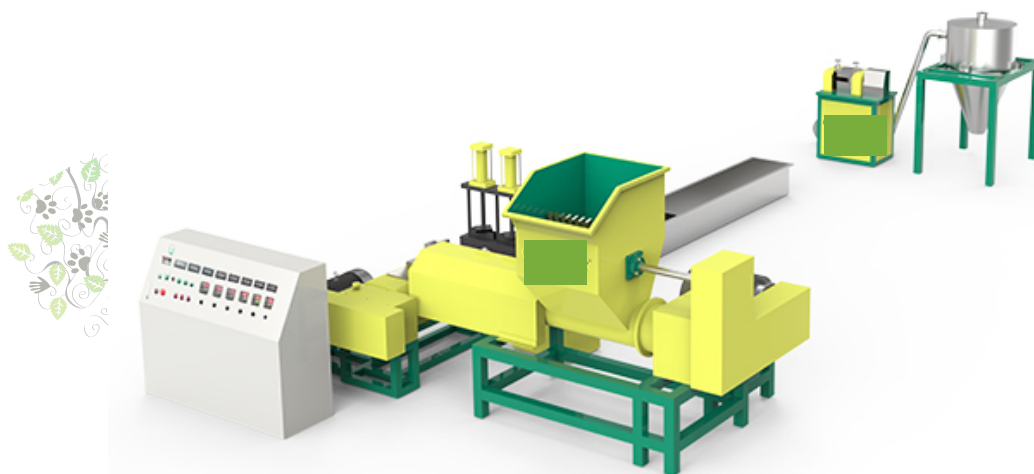
- High efficiency, intelligence, and simple operation
- Ultra-low energy consumption, energy conservation, and environmental protection
- Personalized customization and reasonable layout
- Durable and easy to maintain
- Online guidance, and brand after-sales
- The cleaning effect is excellent with advanced technology

**TECHNICAL DATA**

- Type: Washing System Triton
- Capacity: 200~300kg/h (For EPS)
- Conveyor Motor Power: 1.5kw
- Crusher Motor Power: 2\*4kw
- Dehydrator Motor Power: 22kw
- Compactor Motor Power: 15.55kw

**ADVANTAGES:**

- High efficiency, intelligence, and simple operation
- Ultra-low energy consumption, energy conservation, and environmental protection
- Personalized customization and reasonable layout
- Durable and easy to maintain
- Online guidance, and brand after-sales
- The cleaning effect is excellent with advanced technology

**TECHNICAL DATA**

- Capacity:100 kg/h
- Crusher Motor Power: 45kw

**ADVANTAGES:1.**

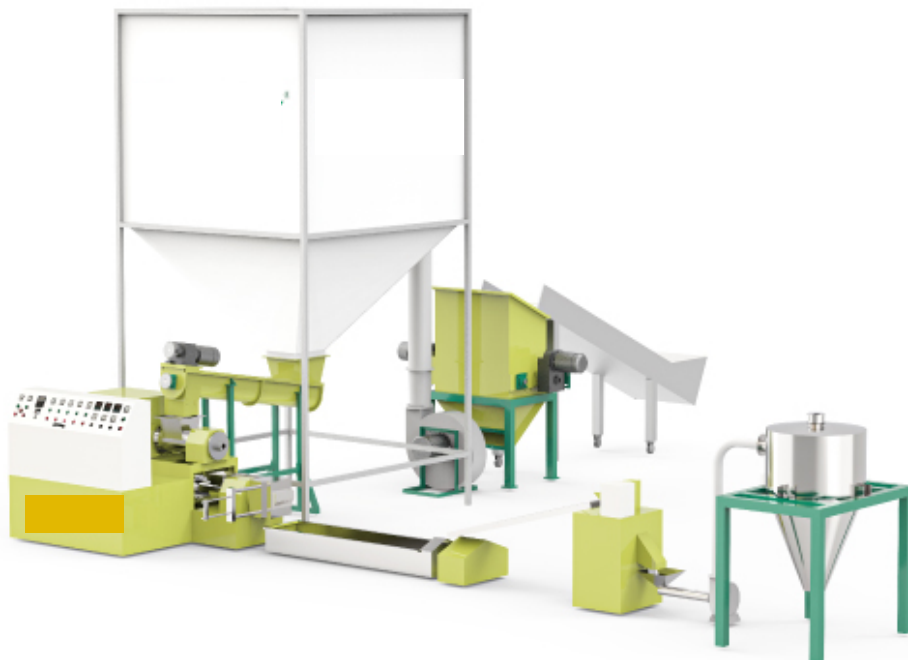
- Production automation, manpower saving
2. Perfect adaption to multiple materials processing system.
3. Space saving and Maintenance friendly
4. The lower investment cost for high quality and durable machines.
5. Online installation guidance and other training service are available.
6. Customized design, which can be used stand-alone, integrated into the complete system with the shredder and compactor, or even into washing lines

## **GRANULATOR MACHINE**

Foam granulator is also called waste foam pellets recycling machine, which can produce foam pellets without destroying the original molecular structure, and the particles produced are widely used.

Available Material: EPS, EPE, EPP, XPS Foam

EPS granulator is the waste EPS foam through crushing - melting - pumping - cooling -



granulation and other processes, the final product into pellets.





BEFORE



AFTER



Euro Food & Brew



Euro Food & Brew

#### **TECHNICAL DATA**

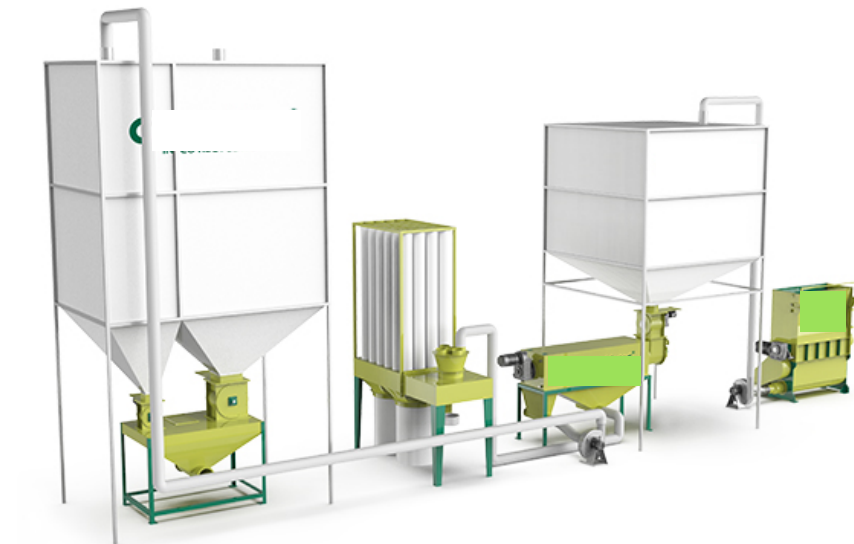
- Capacity:150-250 kg/h
- Crusher Motor Power: 45kw

#### **ADVANTAGES:1.**

1. Production automation, manpower saving
2. Perfect adaption to multiple materials processing system.
3. Space saving and Maintenance friendly
4. The lower investment cost for high quality and durable machines.
5. Online installation guidance and other training service are available.
6. Customized design, which can be used stand-alone, integrated into the complete system with the shredder and compactor, or even into washing lines

## **EPS RECYCLING SYSTEM**

EPS recycling system is a large EPS recycling machine, which is specially used for recycling EPS beads. First, waste EPS is broken into EPS beads. These beads are the "monomers" that make up EPS. Then, the reusable EPS beads and the non-reusable EPS beads are separated by the EPS recycling system, and finally, the use of recycled EPS beads and EPS beads is realized. materials are mixed to manufacture new EPS products.



Before ▼



After ▼



#### **ADVANTAGES OF EPS RECYCLING SYSTEM:**

- It combines crusher, de-dust, collection, and mixer to form integrated equipment with high recovery efficiency.
- Waste EPS is recycled, greatly saving production costs.
- Simple structure and flexible operation. The feeding speed can be controlled and the mixing ratio of the new material and the waste material can be controlled.
- Each component is independent and easy to maintain. Provide online after-sale service.



Euro Food & Brew



Euro Food & Brew